

# HOLSWORTHY MARKET REPORT

## Wednesday 16 October 2024

**EVERY WEDNESDAY**

**Gates open 6am**

### SALE TIMES

09:45 am - Draft Ewes followed by Finished Lambs

10:30 am - Store Lambs

09.45 am - Calves followed by Stirks

11:00 am - Store Cattle followed by Finished & OTM Cattle

11:00 am - Dairy Cattle



**499 Calves at Holsworthy today sold to another remarkable trade with  
45 active buyers present**

## 536 LAMBS 102 DRAFT EWES AND RAMS

09:45am

Auctioneer: Steve Prouse - 07767 895366

Larger entry of store lambs with a lot of lambs hardly lean due to the wet weather we have had. Overall average of 290.6ppk with the good meat selling to a top of 316ppk for two pens of 40.2kgs £127 from A & J Hawkins, East Fattacott Farm, Hartland. Mike Down, Whitsley Barton, Winkleigh saw his 40.4kgs make 309p £125. C Drummond, Sunnymead, Inwardleigh realised 302ppk for 41kgs £124. Top on the day was £145 from Mike Watkins, Lower Hollam, Torrington.

### 102 DRAFT EWES

Smaller entry but a brighter trade especially for the grazing ewes with again seven buyers present. Top on the day was £115 for Suffolk x from Mike Bluett, Cherriton, North Tamerton. Texel x ewes to £110 from GM Hopper, Whitstone. Grazing ewes £70 to £102.

**More ewes wanted next week please.**

### 166 BREEDING EWES

Small entry with a strong trade. Top being £195 for Suffolk x 2T from Mike Hill, Bideford. Graham Hookway, Great Huish Farm, Torrington made £153 for his Suffolk x 6T-FM and £142 for his Mule FM.

### 100 STORE LAMB

Small entry with still a strong trade. Top being £112 for two pens of Charollais x from Rod Wood, Forda Farm, Thornbury.

### 27 RAMS – Auctioneer: Sam Hutchings – 07553 307293

Smaller entry and a total clearance. Top on the day was £480 for a Suffolk 2T from GJ White, Crediton who also realised £420 for another. Charollais 2T from Rod Wood, Forda Farm, Thornbury topped at £380 and a Texel 2T realised £400 from Mrs A Kenyon, Fir Tree Cottage, Redruth.

WEIGHT	TOP		AVERAGE	
	Per head	P/Kg TLW	Per head	P/Kg TLW
<b>LAMBS</b>				
32.1 - 39	114	295	104	280.6
39.1 - 45.5	129	316	125	291.4
45.6 - 52	138.50	286	135	276.8
52 +	145	278	139.20	264.1
<b>Overall</b>	145	316	133	290.6
<b>Ewes</b>				
Light	102		76	
Heavy	115		108	
<b>Rams</b>				



**Entries invited for next week, please contact Steve on 07767 895366  
Fieldsman Ryan Walter on 07534 166251**

**SATURDAY 19<sup>th</sup> OCTOBER 2024 – 2pm**  
**SWADDLEDOWN FARM, BRATTON CLOVELLY, OKEHAMPTON**  
**Annual Sale of 2000 Store Lambs being**

- 1200 shorn Suffolk x Mule Store Lambs
- 800 shorn Texel x & Charollais x Store Lambs

All Lambs April-May born, shorn & FABBL  
On behalf of Messrs G & P Moyse  
For further details please contact Steve Prouse on 07767 895366

**KIVELLS**  
www.kivells.com

## 499 CALVES & WEANED CALVES – 09:45am

Auctioneer: Tim Kivell - 07788 281900

**A whopping great entry of 1 calf shy of 500 calves through Holsworthy market. Calf numbers dramatically in front of all other centres in the south of England and plenty of demand for all classes. 63 vendors selling with us today and going home delighted with their days trading within Holsworthy's calf section. 45 different buyers present creating another fierce trade for all breeds and sizes, take a look at the averages!! Keep the calves coming!!**

### WEANED CALVES (27)

A handful penned which sold well for what was put together. British Blue steers soared away to £580 (6m) in from DE & TA Grigg, Monkleigh who sold another one at £560. Hereford steers from the same farm to £370.

WEANED CALVES						
BREED	BULLS			HEIFERS		
	No	Top	Ave	No	Top	Ave
Hereford	3	370	323	4	365	353
British Blue	7	580	409	3	390	354
Aberdeen Angus	2	310	295	5	360	340
Limousin	3	330	273	-	-	-

### MILK CALVES (472)

#### A huge entry and a marvellous trade!

South Devon bulls to £550 and £470 for P Marjason, Torrington. Older British Blue bulls to £500 for Tredinnick Farm, Liskeard. Younger sorts to £425 and £405 for RB & NJ Veale, Halwill again at £405 for FK M & SK Kendall, Lanviet. Outstanding Charolais bulls to £500, £400, £395 for RG & LA & SR Wearing, Tavistock and £392 for FW Dymond & Son, Shebbear. Limousin bulls to £455 for OJ Stephens, Liskeard, £450 for AJ & PE Nancekivell, Kilkhampton and £400 again for OJ Stephens. Aberdeen Angus bulls to £342 (x2) for DE & TA Grigg, Monkleigh, £318 for LJ & LE Luxton & Son, Milton Damerel and £290 twice for RK & CL Sainsbury Ltd, Launceston and D Philp &

MILK CALVES						
BREED	BULLS			HEIFERS		
	No	Top	Ave	No	Top	Ave
A. Angus	47	342	201	33	240	114
Limousin x	44	455	250	36	330	191
British Blue	88	500	284	69	385	210
Hereford x	26	315	221	17	265	155
Charolais x	28	500	299	18	305	211
Friesian	29	212	93	3	60	60
Simmental	5	272	236	9	380	227
South Devon	2	550	510	-	-	-
Devon x	-	-	-	1	160	160

Son, Looe. Hereford bulls to £315 for TP & JH Isaac, Holsworthy, £288 for RK & CL Sainsbury again and £270 twice for RWH Dilling, Highampton and RB & NJ Veale again. Simmental bulls to £272, £260 (x2) and £230 for J Sillifant, Pancrasweek. British Blue heifers to £385 for FK M & SK Kendall again, £340 for DE & TA Grigg again, £315 for Tredinnick Farms, Liskeard and £305 for GR & TG Bond, Langtree. Simmental heifers to £380 for DW & SC Gillbard, Black Dog and £305 for FK M & SK Kendall again. Limousin heifers to £330 (x2) for AJ & PE Nancekivell again, £302, £300 and 260 for MJC Hambly, Pengover. Charolais heifers to £305, £280 for Messrs Tucker & Sons, Goodleigh and £265 D Philp & Son, Looe. Hereford heifers to £265 (x2) for RWH Dilling, £255 for DE & TA Grigg again and £210 for Cory Farm, Morwenstow. Aberdeen Angus heifers to £240 (x2) for DE & TA Grigg again, £220 for CJ & CM Budge, St Giles and £210 for RK & CL Sainsbury Ltd again. Devon heifers to £160 for AS Brenton & Sons, St Keyne.

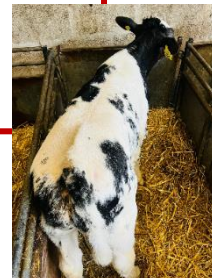
### DAIRY SIRED CALVES

Friesian bulls remain very well sought after with a pair of fleshy types selling very well to £212 for Tucker & Sons LTD of Bradnich with others to £205 & £182 for C Budge, St Giles and £138 DE & TA Grigg, Monkleigh. 29 Friesian bulls averaged an impressive £93.34.

**Please pre enter calves so we can inform potential buyers of anticipated numbers. Text, call or WhatsApp Tim Kivell 07788 281900**

#### Next week Calf entries

**An outstanding run of approx. 100 British Blue & Hereford Calves 3-6wks old coming from one Cornish farm. All out of large framed Holstein Friesian Cows**



**240 STORE CATTLE – 11:00am**  
 Auctioneer: Ian Caunter – 07813 068935

More cattle required as the trade jumped this week with a lot of fresh buyers around the ring looking for cattle to house. In the older section several good consignments of forward cattle topped to £1700 for four Limousin x steers from Messrs RA & D Cleave, Woolsery. A cracking run of young 16mth single suckled Aberdeen Angus steers from Mr RKH Vooght, Petrockstowe £1685 (2), £1630 and £1470. Other single suckled Blonde steers 19mths from Messrs RG & SM Ley, Petersmarland £1540 and £1525(3). The best of the Dairy x Blues was £1450 realised by Messrs L & A Gould & Son, Holsworthy and also a 23mth British Blue from Messrs DJ & SM Ley, Bradford also £1450. Native x steers to £1420 for a Welsh Black from Mr RJ Wade, Welcombe. Several well fleshed heifers to £1625 for a 17mth Aberdeen Angus from Mr RKH Vooght, Petrockstowe, who also sold others at £1440. Other Charolais from Mr GW Bowden, Black Torrington £1410. Others from Messrs RA & DT Cleave, Woolsery £1405 (4) and Mr GW Bowden, Black Torrington £1390. Top call of the Limousins was £1330 for five 25mth heifers from Messrs RA & DT Cleave, Woolsery. **More required please.**

**YOUNGER STORES**

Another good entry of young cattle. Single suckled Simmental steers £920. Other 9mth single suckled Charolais steers 6mths from Mr SJ Stevens, Barnstaple £995 (5), who sold other 5mth Limousin steers £920. Other 9mth single suckled Charolais steers from Messrs SR & SM Crocker, Lewdown £975 (2), with heifers from the same farm £1150 and £1010. Other young 5mth single suckled Simmental heifers from Mr SJ Stevens, Barnstaple sold exceptionally well at £810. Several good entries of young British Blue steers saw a top of £1130 from Messrs SC & KL Durling, Holsworthy, who sold four others 13mths £1040. Another consignment of 13mth British Blue steers from Mr S Hopper, Holsworthy topped at £1015, others £1000 and £965. Younger 7mth-9mth British Blues from Yeo Vale Farm Ltd, Bideford £885 (5), £805 (5). Aberdeen Angus steers to £1200 from Messrs SC & KL Durling, Holsworthy, others £950 (7) and £850 (4). 11mth Aberdeen Angus steers from Mr S Hopper, Holsworthy £870 (7). A good run of young 7mth single suckled Herefords from Mr AC McLaren, Bideford saw steers £900 (2) and £840(4). Heifers selling well at £750 and £710 (7mths). Friesian steers in short supply. £1005 the top for two organic steers from Cory Farm Ltd, Morwenstow, who sold others £910 and younger Friesians from Messrs L & A Gould & Son, Holsworthy £900.

**OTM WEIGHING COWS**

155ppk was the top for an 842kilo South Devon cow from Mr P Marjason, Torrington £1305. Others 148ppk from the same farm.

**To book in stores or arrange an on farm valuation, Tel: Alec Shadrick 07767 896136, Charlie Kivell 07794 000325 or Holsworthy Office 01409 253275**



**Penbode Farm Vets** Since 1840

Dairy, Beef and Sheep Clubs  
Data Analysis

Competitively priced farm medicines  
Live stock fertility testing and advice

Vet Tech services  
Disease Prevention

Holsworthy Stratton Bradworthy Camelford

[www.penbodevets.co.uk](http://www.penbodevets.co.uk)



**KIVELLS** [www.kivells.com](http://www.kivells.com)

**Rural Professional**

Exeter 01392 252262  
 Holsworthy 01409 253275  
 Launceston 01566 776886  
 Liskeard 01579 345543

Your Kivells Rural Professional Department offer a complete valuation and rural service.

- ✓ Capital Grants
- ✓ Compensation
- ✓ Renewables Advice
- ✓ Sustainable Farming Incentive
- ✓ Valuations
- ✓ Landlord/Tenant
- ✓ Planning

## 45 DAIRY CATTLE

Auctioneers: Mark Bromell - 07966 430001

Mark Davis - 07773 371774

### DAIRY TRADE ON FIRE WITH SALE TOPPING AT £3100!!

A smaller entry for the mid-month dairy sale saw trade on fire for fresh milk throughout!! Topping the sale at £3100 was a fresh calved heifer yielding 33Kgs on behalf of Messrs AJ Pomeroy & Son of East Putford. The same vendors also sold quality heifers to £2850, £2700 (x2), £2650, £2550, £2500, and £2300 with their consignment averaging a very impressive £2600. Steve Davey & Partners of Woolserly also sold a super heifer 'Westtown Christmas 9' at £3000 with another fresh heifer 'Westtown Cinderella 26' selling at £2600. Steve Murch & Family of Umberleigh sold their fresh calver heifer 'Littleweir Raphael Cherie 2' at £2200. Cows also saw an excellent trade topping at £2450 for a third calving cow yielding 41Kgs on behalf of John and Sarah Sandercock of Launceston with another 3<sup>rd</sup> calver realising £2200. Messrs PD & SK Blake of Torpoint sold a 2<sup>nd</sup> calving cow 'Whistand 4369 Pepper Eva GP81' yielding 37Kgs at £2100 with a 4<sup>th</sup> calver 'Whitsand 411 Amaz Lilac VG86' at £2000. Crossbred Cows also sold to a strong trade topping at £1880 for a 1<sup>st</sup> calving Fleckvieh X heifer on behalf of Messrs MW & SE Wooldridge of Umberleigh.

A smaller entry of In Calf Heifers topped at £1300 for a heifer due mid-November on behalf of MW & SE Wooldridge with crossbred heifers due December realising £1000 on behalf of The Hale Farming Partnership of Bridgerule. Heifer Calves sold to a stronger trade than recent weeks, realising £150 for a group of 5 September born calves on behalf of Bradley Farm Partnership of Camelford.

WEEKLY MARKET	Top	Ave
Freshly Calved Heifers	3100	2500
Freshly Calved Cows	2450	2029
All Holstein Friesian Fresh Milk	3100	2273
Crossbred Cows and Heifers	1880	1615
In Calf Heifers	1300	1100
Jersey Yearling Heifers	350	335
Heifer Calves	150	150



## FORTHCOMING DAIRY SALES

### WEDNESDAY 23 OCTOBER – HOLSWORTHY LIVESTOCK MARKET

Sale of Dairy Cattle.

### FRIDAY 25 OCTOBER – EXETER LIVESTOCK CENTRE

Sale of Dairy Cattle.

### WEDNESDAY 30 OCTOBER – HOLSWORTHY LIVESTOCK MARKET

#### \*HOLSWORTHY DAIRY EVENT\*

Classes for Best Cow In Milk, Best Heifer In Milk, Overall & Reserve Champion

For further information or to enter Dairy Cattle please contact Charlotte at the Holsworthy Market Office 01409 253275 or email [dairy@kivells.com](mailto:dairy@kivells.com).

LIVE & ONLINE

# MACHINERY

## *On Farm Dispersal*

OCT

26

10:30am

KIVELLS

MACHINERY



On behalf of  
I K Lobb



MartEye™

Treblethick Farm, St Mabyn, Bodmin, PL30 3BY

DISPERSAL SALE OF COMBINE, HANDLER, TRACTOR, MACHINERY & EFFECTS

**KIVELLSMACHINERY.MARTEYE.IE**

01409 253253 | MACHINERY@KIVELLS.COM | WWW.KIVELLS.COM

LIVE & ONLINE

# HOLSWORTHY MONTHLY MACHINERY



**NOV**

**2**

**9:30am**

**online bidding  
from 11am**

**GET YOUR ENTRIES IN NOW FOR  
FULL & FREE ADVERTISING!**

Call: 01409 253253

WhatsApp: 07399 298995

Email: [machinery@kivells.com](mailto:machinery@kivells.com)

**Holsworthy Livestock Market, New Market Road, Holsworthy, Devon EX22 7FA**

Monthly sale of tractors, vehicles, trailers, machinery & farming equipment + much more!

**KIVELLSMACHINERY.MARTEYE.IE**

**WWW.KIVELLS.COM**

Bid Online with



**MartEye**

# VET ATTESTATIONS

## WHAT'S CHANGING & WHY?

Changes in EU legislation, as from **13th December 2023**, will require all producers selling livestock for slaughter to have had an annual on-farm veterinary visit to allow their animals, and/or part of any animal, to be exported out of the UK

### THIS WILL BE VERIFIED BY A VETERINARY ATTESTATION DECLARATION.

Provided by the vet on farm, valid for 12 months.

Includes a unique veterinary attestation number ("VAN")

Example

1234567 - 12/345/6789 - 1024

[Vet MRCVS number] [CPH no.] [Valid to end of Oct 2024]

### VENDORS SHOULD PROVIDE THE AUCTIONEERS WITH THEIR "VAN" NUMBER

Members of qualifying assurance schemes (Red Tractor, FAWL WLBP, QMS) do not require a veterinary attestation declaration

Guidance provided by the Livestock Auctioneers Association Limited  
[www.laa.co.uk](http://www.laa.co.uk)



# VET ATTESTATIONS

## WHAT'S THE PROCESS IN LIVESTOCK MARKETS?

### VENDOR PROVIDES THE AUCTIONEERS WITH THEIR "VAN" OR QUALIFYING ASSURANCE SCHEME MEMBERSHIP NO.



**SHEEP** - Included within the official sheep movement form



**CATTLE** - Via the market entry form



**PIGS** - Via the digital eAML2 form

A "VAN" is valid for 12 months.

### AUCTIONEERS UPLOAD VENDORS "VAN" INTO THE MARKET SYSTEM

Any livestock that are not accompanied by a "VAN" or assurance scheme membership will be announced at point of sale.

### FOLLOWING SALE, THE "VAN"/ASSURANCE NUMBER FOR EACH LOT WILL BE PROVIDED TO THE PURCHASER ON THEIR SALES INVOICE

This can be provided to the abattoir Vet if/when required.

The requirement for Veterinary Attestations for all livestock sold for slaughter is due to a change in EU legislation.

Guidance provided by the Livestock Auctioneers Association Limited  
[www.laa.co.uk](http://www.laa.co.uk)



# VET ATTESTATIONS

## HOW TO PREPARE FOR THE CHANGES

**Prior to 13th December 2023**, livestock producers should arrange a **veterinary visit on farm for completion of the Veterinary Attestation Declaration.**

This visit can coincide with any other routine on-farm veterinary visit, or **Animal Health & Welfare Pathway Review.**  
Speak to your Auctioneer for more details (AHWP - England Only).

In some cases, vets may be able to provide retrospective Veterinary Attestation Declaration if a recent on-farm visit has taken place that meets the requirements.

**OR** producers can provide evidence of a qualifying assurance scheme.

(Red Tractor, FAWL WLBP, QMS)

The requirement for Veterinary Attestations for all livestock sold for slaughter is due to a change in EU legislation.

Guidance provided by the Livestock Auctioneers Association Limited  
[www.laa.co.uk](http://www.laa.co.uk)



# VET ATTESTATIONS

## WHAT ELSE DO I NEED TO KNOW?

### IS A "VAN" NUMBER REQUIRED FOR ALL LIVESTOCK?

No. A "VAN" is only required for livestock sold for slaughter, from the consigning holding.

### IS THERE A MINIMUM RESIDENCY PERIOD FOR THE LAST HOLDING?

The requirement for a "VAN" number is applicable only to the last holding, regardless of residency period.

### WHAT HAPPENS IF A VENDOR DOES NOT HAVE A "VAN" OR MEMBERSHIP OF AN ASSURANCE SCHEME BY 13TH DECEMBER 2023?

Any livestock without a "VAN" or membership of a qualifying assurance scheme will be identified at point of sale and may not be eligible for export.

The requirement for Veterinary Attestations for all livestock sold for slaughter are due to a change in EU legislation.

Guidance provided by the Livestock Auctioneers Association Limited  
[www.laa.co.uk](http://www.laa.co.uk)





## Market Prices

# Mart Customers get Daily Prices for free

Sign up or upgrade  
your plan with your  
mart account  
number\* for market  
prices 12pm & 8pm  
daily, for free.

\*Usually found on your sales  
invoice or statement.

[marketprices.laa.co.uk](https://marketprices.laa.co.uk)



Market Prices

The screenshot shows the 'Market Prices' app interface. At the top, there is a header with the LAA logo, the title 'Market Prices', and user profile and menu icons. Below the header is a 'Filters' button. The main content is a table with the following data:

Old Season Lambs 12/03/24	Total	
	Number	Price p/kg
Super Light (17-25.4kg)	121	253.7
Light (25.5-32kg)	934	317.4
Standard (32.1-39kg)	4273	365.9
Medium (39.1-45.5kg)	10207	391.8
Heavy (45.6-52kg)	8351	390.0
Other (over 52kg)	2947	377.6
<b>SQQ (25.5-45.5kg)</b>	<b>15414</b>	<b>380.1</b>
<b>Total</b>	<b>26833</b>	<b>382.4</b>

Below this table, the start of another section for 'Cull Ewes' is visible, with a 'Total' column header.

# ARE YOU A PART OF THE FARMING COMMUNITY?

## WE WANT TO HEAR FROM YOU!

# FARM WELL

Farmers and farm workers are an important part of our community. We understand that farming is a demanding profession and can be unpredictable.

We also know that accessing healthcare and advice is not always easy. We need you help to get a better understanding of the needs of the farming community when it comes to healthcare.

You can let us know your thoughts via the 'Farm Well' survey - simply scan the QR code on this poster to take part!

**SCAN HERE TO  
TAKE PART**



This survey is part of a University of Exeter preliminary consultation project being run by SPHERE (the School for Public Health Environments Research at Exeter).

This survey is totally anonymous. The findings will be used to inform a funding application. The findings will not be analysed and will not be used for publication.



University  
of Exeter

# GRAB YOURSELF A MINI HEALTH CHECK



- BLOOD PRESSURE CHECK
- BLOOD SUGAR TEST



**KNOW YOUR NUMBERS!**

Coast & Country Primary Care Network healthcare staff are at  
**HOLSWORTHY LIVESTOCK MARKET**  
WEDNESDAYS - 9am to Lunchtime

17<sup>th</sup> July, 14<sup>th</sup> August, 18<sup>th</sup> September, 16<sup>th</sup> October,  
and 20<sup>th</sup> November 2024.

**Healthcare where YOU are!**





## READY MIXED CONCRETE

We supply for delivery and collection:

Ready mixed concrete

Liquid floor screeds

Dry screed

Sand & Aggregates

**QUALITY**

**ASSURED**

8-wheeled, 6-wheeled conveyor  
and 4-wheeled mini mix trucks available

For quotes, bookings and more information, please  
call us on 01288 362111 (option 2) or email us at  
[rmc@macplant-ltd.co.uk](mailto:rmc@macplant-ltd.co.uk)



BSI  
ACCREDITED  
BS EN 206  
BS 8500

Mac Crete  
Bridgerule Industrial Estate  
Holsworthy  
EX22 7EB



[www.macplant-ltd.co.uk](http://www.macplant-ltd.co.uk)

# LARK PLANT HIRE LTD

PLANT HIRE, HAULAGE & AGRICULTURAL  
CONTRACTORS



## FORAGING SERVICES

ALSO AVAILABLE  
AS REQUIRED

Triple Mowers  
Double Mowers  
Tedding  
50ft Rake  
30 ft Rake  
4 Silage Trailers  
Buckrake  
Loading Shovel



## LIME SPREADING

Two types of lime  
and sea sand for  
your  
spreading  
requirements

FREE soil testing!



## OVERSEEDING

For all herbal ley  
overseeding, grass,  
rape,  
wild bird seed and  
cover crops



All available for 2024 Season! Email: [office@larkplant.co.uk](mailto:office@larkplant.co.uk)

Call Office: 01409 211214

Ian: 07939 538902 or Rob: 07854 362450



## **Lely Collector - A revolutionary manure robot**

The Discovery Collector is specifically designed for barns with solid floors and can easily navigate in between the cows, the sorting gates and around the cubicle passages and waiting area.

Call Lely Center Holsworthy on 01409 413122 for more information



[www.lely.com/australia/center/holsworthy/](http://www.lely.com/australia/center/holsworthy/)